



PRODUCT DESCRIPTION:

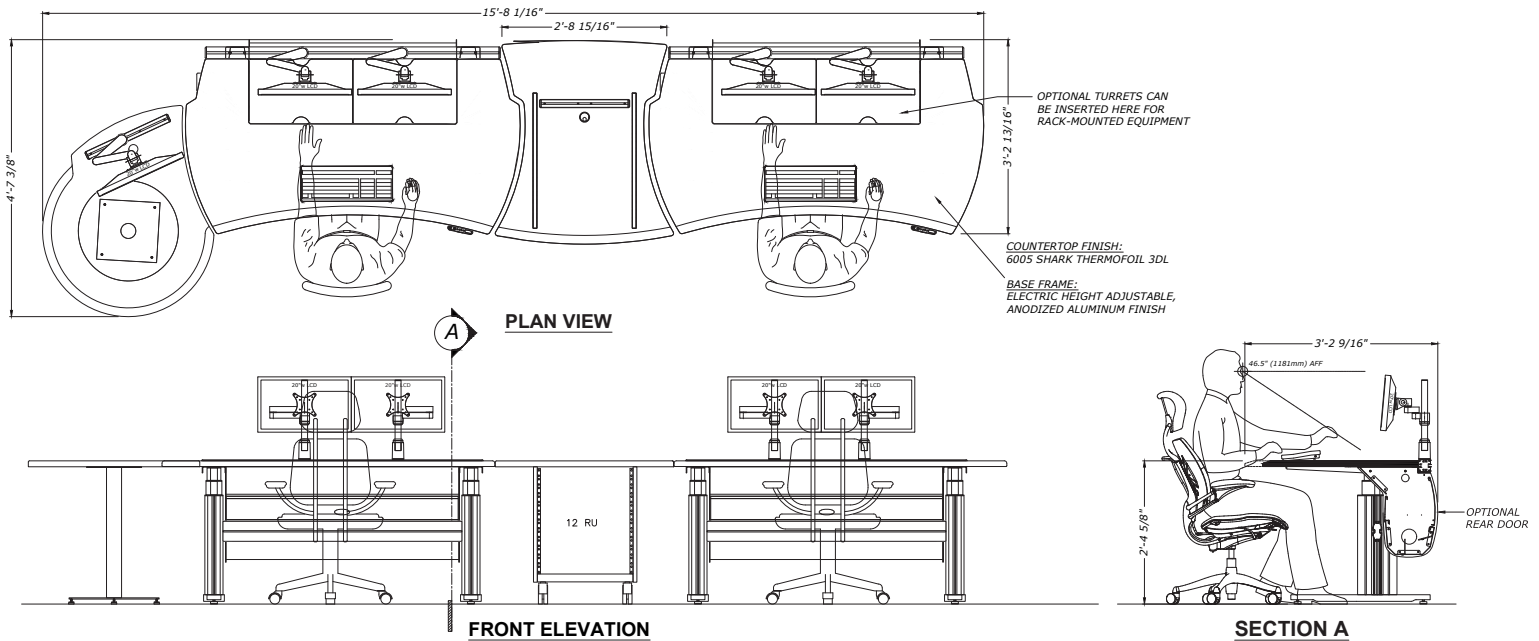
Shark Grey 3DL (Thermofoil) standard finish with ergonomic chamfered front edge.

Stable leg design with levelers: Anodized aluminum leg and steel foot with silver finish

Various configurations available utilizing stock SmartTrac and SmartCart components

FEATURES:

- Sit/Stand option available
- Rear Trac for articulating monitor arms, speaker arms and other accessories.
- I-CORE technology enclosure with rear access, vertical divider for power/data and optional powerstrip. Mini-Core optional for setups requiring less cable management
- Cable + power management compartment. Multiple surface and edge finish options available at <http://www.tbconsoles.com/Finishes.html>



Note: The above configuration is just a one sample setup, various pieces are interchangeable and available in different sizes

