



PS-1220-IEC IEC Power Strip

Product Description and Features:

Provides a reliable 200-240V 50/60Hz i(16/20A) input voltage for rack equipment and other data center application needs.

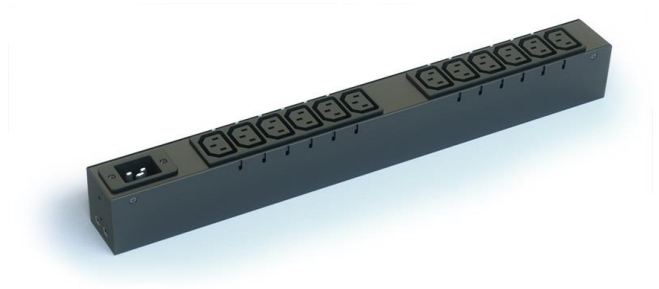
Interconnection couplers enables use of standard inlets with country-specific cord sets.

Basic cabinet PDU provides both power distribution and branch circuit protection for 30-Amp rated devices.

Equipped with 12 IEC 60320/C20 Power Inlets

Other configurations are available upon request.

Finish: Standard Black



Other configurations are available upon request.

